



# Cartridges for Wolke thermal inkjet (TIJ) printers

The interaction between original cartridges and standardized inkjet inks from Wolke helps ensure maximum quality. Our broad range of inks impresses users with excellent contrast, a high level of light fastness and long decap times.



Wolke thermal inkjet printers can generate a maximum print resolution of 600 x 600 dpi. As such, crisp, easily readable codes can be generated, which meet the code standards of GS1, securPharm, HIBCC, and ICCBBA. Regardless of whether alternative character fonts, logos, one-dimensional bar codes or 2D codes are required, thermal inkjet technology can provide it subject to substrate characteristics and production environment.

## TIJ cartridge authentication\*

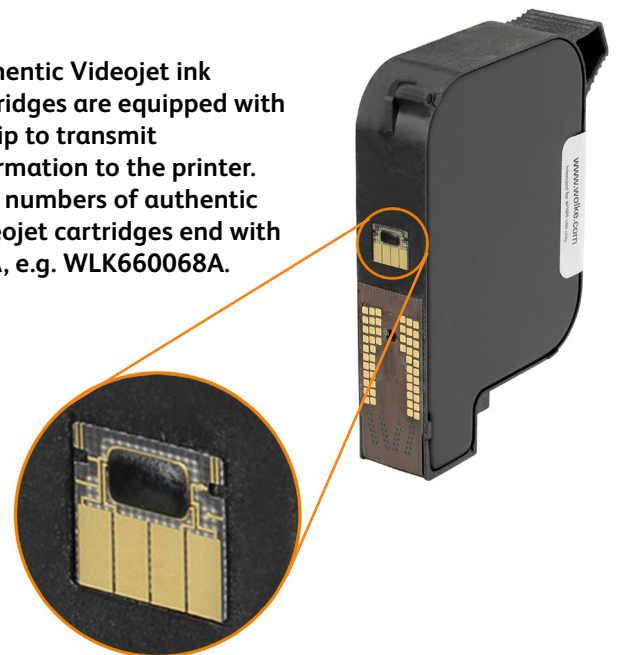
The new Wolke m610 series automatically recognizes authentic Videojet ink cartridges and offers many new features help reduce user errors and ensure maximum printing quality.

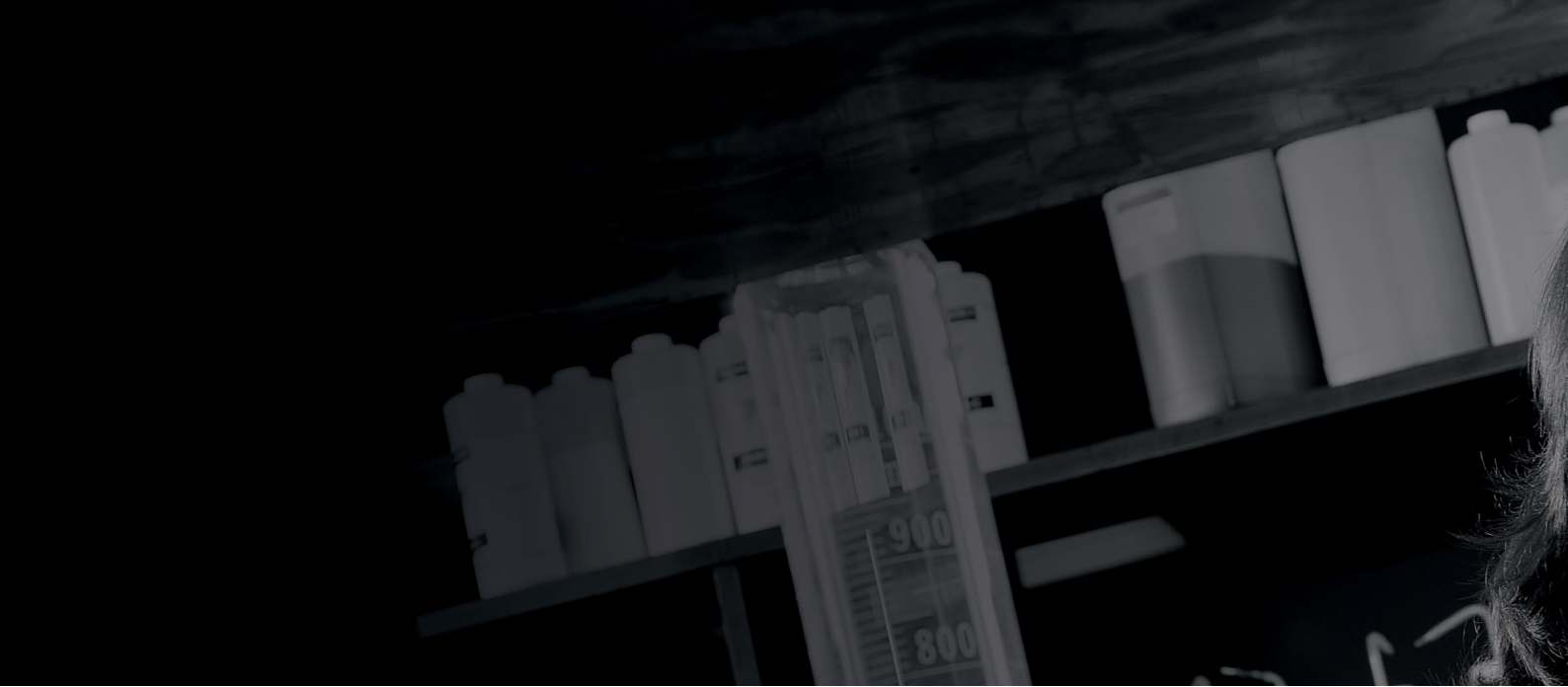
### Features include:

- Portable ink level tracking
- Nozzle health checks
- Restriction/permission of ink type
- Ink batch/lot number tracking
- Expiration date notification

\*TIJ cartridge authentication is only available when using the Wolke m610 series in combination with authentic Videojet ink cartridges. Authentic Videojet ink cartridges work seamlessly in the older models m600 advanced, m600 oem, m600 universal and m600 touch.

Authentic Videojet ink cartridges are equipped with a chip to transmit information to the printer. Part numbers of authentic Videojet cartridges end with an A, e.g. WLK660068A.





**Discover our new advanced TIJ ink solutions**

Our new Premium Black, Global Black, and Global Solvent advanced TIJ ink solutions are proprietary to Videojet and have been formulated and are manufactured in-house.

This brings numerous benefits:

- Strict control over raw material quality, manufacturing processes and supply chain management to ensure high-quality, stable supply
- Confidence in the ink formulation and compliance with major applicable global regulations
- Ink is filled in genuine HP® cartridges - you get a new printhead every time you replace a cartridge

**Discover our new TIJ inks whose features may outperform your current ink solution!**

**Our consumables team is happy to advise you on the ink conversion.**

**Our new alternatives for your water-based ink**

<p>Do you currently use <b>Universal Black?</b></p>	<p>With our <b>Premium Black</b> you will experience:</p> <ul style="list-style-type: none"> <li>• A darker black print</li> <li>• Longer shelf life of 24 months (vs 18 months)</li> </ul>	<p>With our <b>Global Black</b> you will experience:</p> <ul style="list-style-type: none"> <li>• Similar performance at improved cost per code</li> </ul>
---	---	--

**Our new alternative for your solvent-based inks**

<p>Do you currently use <b>Flex Solvent</b> or <b>Black Solvent?</b></p>	<p>With our <b>Global Solvent</b> you will experience:</p> <ul style="list-style-type: none"> <li>• Longer shelf life of 9 months (Flex Solvent 6 months; Global Solvent 9 months)</li> <li>• Faster drying time (&lt;3 sec on most substrates and in most environments)</li> <li>• Superior print quality on wide variety of substrates</li> <li>• Improved cost per codes</li> </ul>
--	--



## Cartridges for m610 advanced, oem and touch

Part Number	Name	Content	Ink Type	Typical Substrates	Decap Performance	Characteristics
WLK660068A	Premium Black	42 ml black	Water-based ink	Slightly absorbent materials, ideal for cardboard and folding cartons	★★★★★	<ul style="list-style-type: none"> <li>High-contrast print,</li> <li>Long decap time</li> <li>Very good light-fastness (WS 6<sup>1</sup>)</li> </ul>
WLK660070A	Global Black	42 ml black	Water-based ink	Slightly absorbent materials, ideal for cardboard and folding cartons	★★★★★	<ul style="list-style-type: none"> <li>Excellent print quality</li> <li>Long decap time</li> <li>Good contour sharpness</li> <li>Fast drying time</li> </ul>
WLK660075A	Water Resistant Black	42 ml black	Water-based ink	Slightly absorbent materials, ideal for cardboard and folding cartons	★★★★★	<ul style="list-style-type: none"> <li>No bleeding or smearing of ink when the packaging is exposed to moisture or condensation after printing</li> <li>Very good light-fastness</li> </ul>
WLK667482A	Universal Black	42 ml black	Water-based ink	Slightly absorbent materials, ideal for cardboard and folding cartons	★★★★★	<ul style="list-style-type: none"> <li>Long decap time</li> <li>Very good light-fastness (WS 6<sup>1</sup>)</li> <li>Fast drying time</li> </ul>
WLK660082A	Global Solvent	30 ml (horiz.) 30 ml (vert.) black	Solvent-based ink	Non-porous surfaces, e.g. coated cardboard, coated folding boxes, blister packs, labels, various foils and plastic types	★★★★★	<ul style="list-style-type: none"> <li>Excellent print quality</li> <li>Long decap time</li> <li>Fast drying time on non-porous surfaces</li> </ul>
WLK660080	Black Solvent	24 ml (horiz.) 30 ml (vert.) black	Solvent-based ink	Coated folding boxes, blister packs, labels, various foils and plastic types	★★★★	<ul style="list-style-type: none"> <li>High contrast print</li> <li>Good adhesion</li> <li>Fast drying time on many non-porous surfaces</li> </ul>
WLK660081A	Flex Solvent	26 ml (horiz.) 30 ml (vert.) black	Solvent-based ink	Non-porous surfaces, e.g. glossy packaging and packaging film and various types of plastic	★★★★★	<ul style="list-style-type: none"> <li>High-contrast print</li> <li>Good adhesion</li> <li>Fast drying time on many non-porous surfaces</li> </ul>
WLK660072A	Non Porous Black	42 ml black	Solvent-based ink	Coated cardboard, coated folding boxes, blister packs, labels, various foils and plastic types	★	<ul style="list-style-type: none"> <li>Fast drying time on many non-porous surfaces</li> <li>Moisture-resistant</li> </ul>

## Cartridges for m600 universal

Part Number	Name	Content	Ink Type	Typical Substrates	Decap Performance	Characteristics
T301-S	8610 MEK Black m600 universal	42 ml black	MEK-based ink	non-porous surfaces, e.g. coated folding boxes, blister packs, various foils and plastic types	★★★★★+ unlimited through CRS <sup>2</sup>	<ul style="list-style-type: none"> <li>High contrast print</li> <li>Good adhesion</li> <li>Fast drying time on many non-porous surfaces</li> <li>Large 42 ml cartridge</li> </ul>
T302-S	8610 MEK Black m600 universal	42 ml black	MEK-based ink	non-porous surfaces, e.g. coated folding boxes, blister packs, various foils and plastic types	★★★★★+ unlimited through CRS <sup>2</sup>	<ul style="list-style-type: none"> <li>High contrast print</li> <li>Good adhesion</li> <li>Fast drying time on many non-porous surfaces</li> </ul>
T501-S	UV-light fluorescent, transparent	42 ml transparent	MEK-based UV-ink	non-porous surfaces, e.g. coated folding boxes, PE, PS, PP, PET, PVC, polycarbonate, nylon	★★★★★+ unlimited through CRS <sup>2</sup>	<ul style="list-style-type: none"> <li>Fluorescent blue under UV light</li> <li>Fast drying time on many non-porous surfaces</li> </ul>

Key: ★★★★★ very good ★★★★ good ★★★ satisfying ★★ sufficient ★ suitability test and careful handling required

<sup>1</sup> WS 6 = very good according to blue wool scale Standard paper APCO II / II in accordance with DIN ISO 12040th.

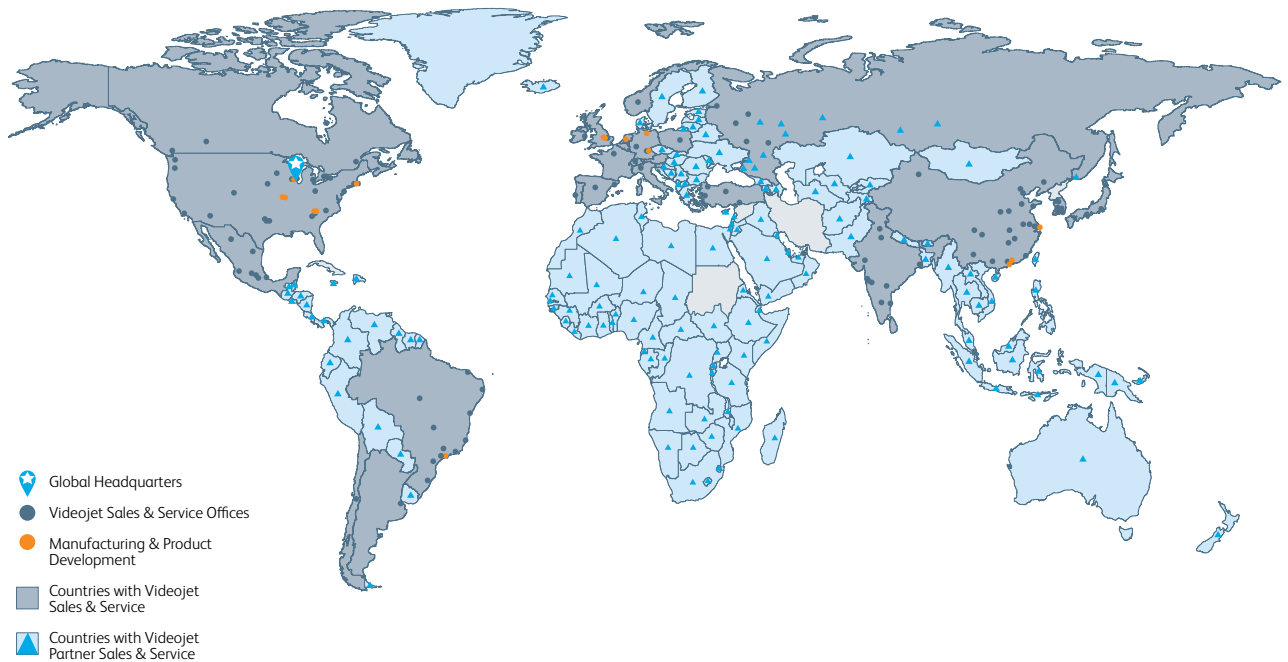
<sup>2</sup> CRS Cartridge Readiness System. The CRS closes after a user-defined time period. A seal is then created, helping to prevent ink from drying in the nozzle array.

# Peace of mind comes as standard

Videojet Technologies is a world-leader in the product identification market, providing in-line printing, coding, and marking products, application specific fluids, and product LifeCycle Advantage™.

Our goal is to partner with our customers in the consumer packaged goods, pharmaceutical, and industrial goods industries to improve their productivity, to protect and grow their brands, and to stay ahead of industry trends and regulations. With our customer application experts and technology leadership in Continuous Inkjet (CIJ), Thermal Inkjet (TIJ), Laser Marking, Thermal Transfer Overprinting (TTO), case coding and labeling, and wide array printing, Videojet has more than 345,000 printers installed worldwide.

Our customers rely on Videojet products to print on over ten billion products daily. Customer sales, application, service and training support is provided by direct operations with over 4,000 team members in 26 countries worldwide. In addition, Videojet's distribution network includes more than 400 distributors and OEMs, serving 135 countries.



Call **(65) 6444 4218**  
Email **marketing.singapore@videojet.com**  
visit **www.videojet.sg**

Videojet Technologies (S) Pte Ltd  
No. 11 Lorong 3 Toa Payoh  
Block B #03-20/21 Jackson Square  
Singapore 319579

© 2019 Videojet Technologies Inc. — All rights reserved.  
Videojet Technologies Inc.'s policy is one of continued product improvement.  
We reserve the right to alter design and/or specifications without notice.  
True Type is a registered trademark of Apple Computer, Inc.

