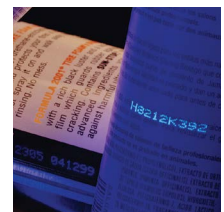
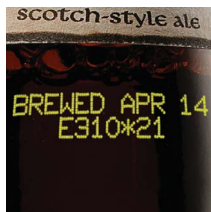




Continuous Ink Jet

Videojet 1000 line print sample guide



Videojet 1000 line print sample guide

Font/Lines	Max. line speed for samples as shown (m/minute)				70 Micron (µ) Nozzle Print Sample
	1220	1520/1550	1600 Series*	1710	
4x7 Single	N/A	N/A	293	244	ABCDEFGF 12345 4X7
5x5 Single	162	279	279	271	ABCDEFGF 12345 5X5
5x7 Single	139	244	244	203	ABCDEFGF 12345 5X7
7x9 Single	70 (70µ) 72 (60µ)	108	163	163	ABCDEFGF 12345 7X9
9x12 Single	78	78	78	79	ABCDEFGF 12345 9X12
10x16 Single	59	59	93	77	ABCDEFGF 12345
16x24 Single	29	29	29	24	ABCDEFGF 1234
25x34 Single	16	16	16	14	ABCDE 12
5x5 Twin	59	78	115	96	ABCDEFGHIJKLMN OP 1234567890 5X5 TL
4x7 Twin	N/A	N/A	146	122	ABCDEFGHIJKLMN OP 1234567890 4X7 TL
5x7 Twin	59	61 (70µ) 81 (60µ)	122	102	ABCDEFGHIJKLMN OP 1234567890 5X7 TL
7x9 Twin	29	36 (70µ) 38 (60µ)	70	58	ABCDEFGHIJKLMN OP 1234567890 7X9 TL
9x12 Twin	26	26	26	21	ABCDEFGHIJKLMN 1234567890 9X12 TL
10x16 Twin	16	16	16	14	ABCDEFGHIJKLMN OPQR 1234567890 10X16 TL
5x5 Three	29	36	36 (70µ) 38 (60µ)	32	ABCDEFGHIJKL 1234567890 5X5 TRI LINE
4x7 Three	N/A	N/A	81	67	ABCDEFGHIJKL 1234567890 4X7 TRI LINE
5x7 Three	27	27	67	56	ABCDEFGHIJKL 1234567890 5X7 TRI LINE
7x9 Three	16	16	16 (70µ) 37 (60µ)	31	ABCDEFGHIJKL 1234567890 7X9 TRI LINE
5x5 Four	26	26	26	21	ABCDEFGHIJKLMN O 1234567890 4 LINES OF PRINT 5X5 QUAD LINE
4x7 Four	N/A	N/A	20	16	ABCDEFGHIJKLMN O 1234567890 4 LINES OF PRINT 4X7 QUAD LINE
5x7 Four	16	16	16	14	ABCDEFGHIJKLMN O 1234567890 4 LINES OF PRINT 5X7 QUAD LINE
5x5 Five	16	16	16	14	ABCDEFGHIJKLMN O 1234567890 5 LINES OF PRINT 5X5 FIVE LINE 70 MICRON NOZZLE

N/A = Not Available *1600 Series includes 1620, 1650 and 1610 Dual Head models.

Videojet 1000 line print sample guide

60 Micron (µ) Nozzle Print Sample	
ABCDEFGF 12345 4X7	
ABCDEFGF 12345 5X5	
ABCDEFGF 12345 5X7	
ABCDEFGF 12345 7X9	
ABCDEFGF 12345 9X12	
ABCDEFGF 12345	
ABCDEFGF 123	
ABCDE 12	
ABCDEFGHIJKLMN OP 1234567890 5X5 TL	
ABCDEFGHIJKLMN OP 1234567890 4X7 TL	
ABCDEFGHIJKLMN OP 1234567890 5X7 TL	
ABCDEFGHIJKLMN OP 1234567890 7X9 TL	
ABCDEFGHIJKLMN 1234567890 9X12 TL	
ABCDEFGHIJKLMNO P 1234567890 10X16 T	
ABCDEFGHIJKL 1234567890 5X5 TRI LINE	
ABCDEFGHIJKL 1234567890 4X7 TRI LINE	
ABCDEFGHIJKL 1234567890 5X7 TRI LINE	
ABCDEFGHIJKL 1234567890 7X9 TRI LINE	
ABCDEFGHIJKLMN O 1234567890 4 LINES OF PRINT 5X5 QUAD LINE	
ABCDEFGHIJKLMN O 1234567890 4 LINES OF PRINT 4X7 QUAD LINE	
ABCDEFGHIJKLMN O 1234567890 4 LINES OF PRINT 5X7 QUAD LINE	
ABCDEFGHIJKLMN O 1234567890 5 LINES OF PRINT 5X5 FIVE LINE 60 MICRON NOZZLE	

UHS *	Max. line speed for samples as shown (m/minute)	
	1620/1650 UHS	50 Micron (µ) Nozzle Print Sample
Font/Lines		
4x5 Single	508	ABCDEFG 12345 4X5
5x5 Single	423	ABCDEFG 12345 5X5
4x7 Single	339	ABCDEFG 12345 4X7
5x7 Single	282	ABCDEFG 12345 5X7
7x9 Single	254	ABCDEFG 12345 7X
10x16 Single	121	ABCDEFG 1234
4x5 Twin	254	ABCDEFGHIJKLMN OP 1234567890 4X5 TL
5x5 Twin	212	ABCDEFGHIJKLMN OP 1234567890 5X5 TL
4x7 Twin	191	ABCDEFGHIJKLMN OP 1234567890 4X7 TL
5x7 Twin	158	ABCDEFGHIJKLMN OP 1234567890 5X7 TL
7x9 Twin	91	ABCDEFGHIJKLMN OP 1234567890 7X9 TL
4x5 Three	179	ABCDEFGHIJKL 1234567890 4X5 TRI LINE
5x5 Three	149	ABCDEFGHIJKL 1234567890 5X5 TRI LINE
4x7 Three	132	ABCDEFGHIJKL 1234567890 4X7 TRI LINE
5x7 Three	110	ABCDEFGHIJK 1234567890 5X7 TRI LINE

Linear print speed and character pitch are interrelated on all CIJ printers. The Videojet UHS speeds detailed in the table above are rated for 10 characters per inch. The printers maximum speed is either faster or slower based upon the chosen character pitch.

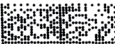







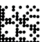


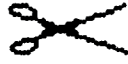
Speed is shown in (meters per minute)

Character Pitch (cpi)	Dual line 4x7 (m/min)	Dual line 5x7 (m/min)	Tri-line 4x7 (m/min)	Tri-line 5x7 (m/min)
16	110	100	90	80
14	125	115	105	95
12	150	135	125	110
10	190	165	155	135
8	240	205	195	165
6	310	265	215	170

*Additional font options available

Videojet 1000 line print sample guide

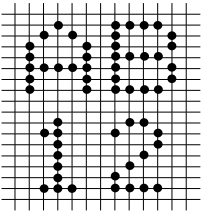
Infinite possibilities

Description	Print Sample
Four line 5x5 with 16x24 single line	<div>BAKED FRESH ON JUNE 12 BEST IF USED BY JUNE 30</div> <div>\$2.29</div>
Logo with four line 5x5	<div><div>F 85-000-00 CEE</div><div>03/04/10 LOT 1324DE 10:34:36</div></div>
9x12 multi-language twin line with 10x16 single line	<div>此日期前最佳: BEST IF USED BY: 02/10/10</div>
10x16 single line over 5x7 single line	<div>SELL BY JUNE 05</div> <div>2% MILK</div>
Three line 5x7 with 2D DataMatrix	<div>04672203002819 R220734 13/04 - 2010</div> <div></div>
UPC-A bar code with 25x34 text	<div>UPC-A</div>
Unlimited possibilities for mixing fonts in the same message	<div>UPC-A BAR CODE TEXT 34H</div>
<div>Linear bar codes</div> <div>Wide range of bar codes for automatic identification. UPC A&E; EAN 8 & 13; Code 128 A, B&C; UCC/EAN 128; Code 39; Interleaved 2 of 5</div>	<div>Code 39 with human readable</div> <div>UPC A</div> <div>Interleaved 2 of 5</div>
<div>2D DataMatrix</div> <div>Wide range of standard 2D and rectangular 2D DataMatrix, including GS1</div>	<div></div>
<div>Multi-stroke</div> <div>To highlight words or numbers and make codes darker and bolder</div>	<div>5 X 7 TWIN LINE DOUBLE STROKE</div>
<div>Tower print*</div> <div>To emphasize whole message or specific characters</div>	<div><div>TOWER</div><div>Multi-stroke</div><div>TOWER - 1022M3</div><div>Tower print – stacked, automatic reverse</div></div>
<div>Inverted/reversed characters</div> <div>Accommodates product lines going any direction and products in various orientations on the production line</div>	<div>REVERSE CHARACTER EGASSEM ESREVER INVERTED MESSAGE</div>
<div>Unique-character languages</div> <div>American, Arabic, Bulgarian, Chinese, East European, European, Greek, Hebrew, Hungarian, Italian, Japanese, Japanese/Kanji, Japanese/Katakana, Korean, Russian, Simplified Chinese, Scandinavian, Thai, Traditional Chinese, Turkish, Vietnamese</div>	<div>合格年月日期生产保质 アカサタナハマヤラフ</div> <div>有效批号班次至品使用</div> <div>Katakana</div> <div>Chinese</div> <div>ابتثجححذدذرزصضطعغفقكللمنهوى</div> <div>Arabic</div>
<div>Graphics and logos</div> <div>Create custom logos on PC and upload via USB</div>	<div><div>----- TO OPEN CUT AT LINE</div></div>

*Only available on 1520, 1620, 1620 UHS & 1720 models

Clear, consistent codes

The 1000 Line produces the sharpest codes in the industry. It precisely places every drop, so marks are always clear and easy to read. Dynamic Calibration automatically maintains consistent print quality, even if environmental conditions change.



The Videojet 1000 line printers are all available with the option of either a 50 micron, 60 micron or 70 micron nozzle inside the printhead. The 70 micron nozzle will benefit customers who require higher contrast or bolder characters, better visible resolution and greater throw distance. The 60 micron nozzle is well-suited for applications that require stronger character definition (ie. Asian and Arabic fonts), smaller print such as that seen on pharmaceutical and cosmetic products and additional spacing between multi-line prints. The 50 micron nozzle, and its specifically paired inks, are designed for high speed applications that require more drops per second and therefore use smaller drops. This nozzle size is also used to get smaller characters and/or more characters on the same space.

ABCDEFGH

70 micron nozzle

ABCDEFGH

60 micron nozzle

ABCDEFGH

50 micron nozzle

Variety of ink choices to match your application

Dye based inks

Videojet offers a variety of ink colors to print on light substrates. Available in black, red, blue and green.



Dye based speciality inks

Some formulations have special characteristics like color change under retort process, optimized performance for high speeds/small nozzle size, alkali washable, food grade and visible under UV light.



Retort process



Food grade



Ultra high speed

Pigmented inks for high contrast applications

Videojet offers pigmented fluids ideal for applications requiring high contrast, bright codes on dark or difficult to mark surfaces. These inks provide easily readable codes for applications in the parts marking, extrusion, wire and cable, beverage, electronics, food and personal care markets.



These inks operate in the Videojet 1710 model and deliver high print quality, excellent adhesion and superior contrast.

Call **+47 9041 8340**
Email **www.videojet.no**
or visit **post.no@videojet.com**

Videojet Technologies Norway
Kirkegårdsveien 45
3616 Kongsberg

©2013 Videojet Technologies Inc. — All rights reserved.
Videojet Technologies Inc.'s policy is one of continued product improvement.
We reserve the right to alter design and/or specifications without notice.
TrueType is a registered trademark of Apple Computer, Inc.
Videojet® BX Series Binary Array Ink Jet Printers.

