

Videojet Legacy Excel High Voltage Power Supply Identifiers – Exchange Offered

Part Number SP355026

Power supplies with the following identifiers REQUIRE Exchange

2011 Globtek Power Supplies

- 2011 Globtek power supplies. No green label or green and yellow labels.
(Exchange Required)



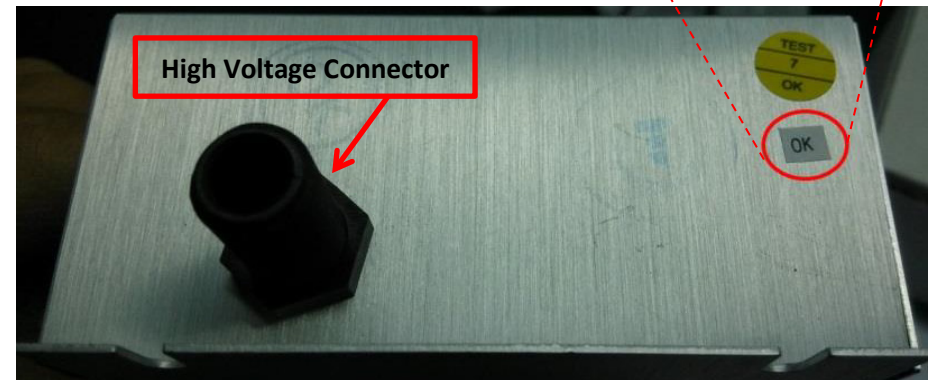
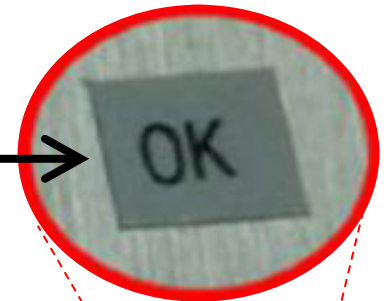
Number "11" at the end of the barcode human readable indicates the power supply was manufactured in 2011.



Globtek Power Supplies with Square "OK" Label

- Globtek power supplies with a square label showing the letters "OK". No green label or green and yellow labels.
(Exchange Required)

The square label with the letters "OK" is located on the side of the power supply with the high voltage connector.



Videojet Legacy Excel High Voltage Power Supply Identifiers – **No Exchange Offered** Part Number SP355026

Power supplies with the following identifiers DO NOT REQUIRE Exchange

Qualified 2011 Globtek Power Supplies

- Qualified 2011 Globtek supplies are marked with a green label or green and yellow labels. (No Exchange Required)
- Examples shown below.



Other Power Supply Manufacturers

- Power supplies manufactured by **Tower Electronics** or **Keltron Corporation**. (No Exchange Required)
- Examples shown below.

