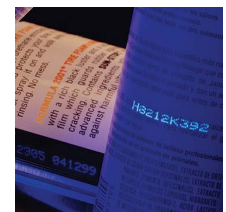
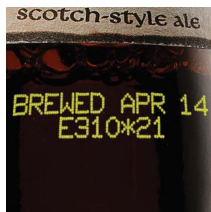




Continuous Ink Jet

# Videojet 1000 Line print sample guide



Videojet 1000 Line print sample guide

Font/Lines	Max. line speed for samples as shown (feet per minute)				70 Micron (μ) Nozzle Print Sample
	1220	1520/1550	1600 Series*	1710	
4x7 Single	N/A	N/A	960	800	ABCDEFGF 12345 4X7
5x5 Single	533	914	914	889	ABCDEFGF 12345 5X5
5x7 Single	457	800	800	667	ABCDEFGF 12345 5X7
7x9 Single	229 (70μ) 237 (60μ)	356	533	533	ABCDEFGF 12345 7X9
9x12 Single	256	256	256	267	ABCDEFGF 12345 9X12
10x16 Single	194	194	305	254	ABCDEFGF 12345
16x24 Single	96	96	96	80	ABCDEFGF 1234
25x34 Single	53	53	53	44	ABCDE 12
5x5 Twin	194	256	376	314	ABCDEFGHIJKLMN OP 1234567890 5X5 TL
4x7 Twin	N/A	N/A	480	400	ABCDEFGHIJKLMN OP 1234567890 4X7 TL
5x7 Twin	194	200 (70μ) 267 (60μ)	400	333	ABCDEFGHIJKLMN OP 1234567890 5X7 TL
7x9 Twin	96	119 (70μ) 125 (60μ)	229	190	ABCDEFGHIJKLMN OP 1234567890 7X9 TL
9x12 Twin	85	85	85	70	ABCDEFGHIJKLMN 1234567890 9X12 TL
10x16 Twin	53	53	53	44	ABCDEFGHIJKLMN OPQR 1234567890 10X16 TL
5x5 Three	96	119	119 (70μ) 125 (60μ)	105	ABCDEFGHIJKL 1234567890 5X5 TRI LINE
4x7 Three	N/A	N/A	265	221	ABCDEFGHIJKL 1234567890 4X7 TRI LINE
5x7 Three	90	90	221	184	ABCDEFGHIJKL 1234567890 5X7 TRI LINE
7x9 Three	53	53	53 (70μ) 121 (60μ)	101	ABCDEFGHIJKL 1234567890 7X9 TRI LINE
5x5 Four	85	85	85	70	ABCDEFGHIJKLMN O 1234567890 4 LINES OF PRINT 5X5 QUAD LINE
4x7 Four	N/A	N/A	64	53	ABCDEFGHIJKLMN O 1234567890 4 LINES OF PRINT 4X7 QUAD LINE
5x7 Four	53	53	53	44	ABCDEFGHIJKLMN O 1234567890 4 LINES OF PRINT 5X7 QUAD LINE
5x5 Five	53	53	53	44	ABCDEFGHIJKLMN O 1234567890 5 LINES OF PRINT 5X5 FIVE LINE 70 MICRON NOZZLE

N/A = Not Available    \*1600 Series includes 1620, 1650 and 1610 Dual Head models.

Videojet 1000 Line print sample guide

60 Micron (μ) Nozzle Print Sample	
ABCDEFGF 12345 4X7	
ABCDEFGF 12345 5X5	
ABCDEFGF 12345 5X7	
ABCDEFGF 12345 7X9	
ABCDEFGF 12345 9X12	
ABCDEFGF 12345	
ABCDEFGF 123	
ABCDE 12	
ABCDEFGHIJKLMN OP 1234567890 5X5 TL	
ABCDEFGHIJKLMN OP 1234567890 4X7 TL	
ABCDEFGHIJKLMN OP 1234567890 5X7 TL	
ABCDEFGHIJKLMN OP 1234567890 7X9 TL	
ABCDEFGHIJKLMN 1234567890 9X12 TL	
ABCDEFGHIJKLMNO P 1234567890 10X16 TL	
ABCDEFGHIJKL 1234567890 5X5 TRI LINE	
ABCDEFGHIJKL 1234567890 4X7 TRI LINE	
ABCDEFGHIJKL 1234567890 5X7 TRI LINE	
ABCDEFGHIJKL 1234567890 7X9 TRI LINE	
ABCDEFGHIJKLMN O 1234567890 4 LINES OF PRINT 5X5 QUAD LINE	
ABCDEFGHIJKLMN O 1234567890 4 LINES OF PRINT 4X7 QUAD LINE	
ABCDEFGHIJKLMN O 1234567890 4 LINES OF PRINT 5X7 QUAD LINE	
ABCDEFGHIJKLMN O 1234567890 5 LINES OF PRINT 5X5 FIVE LINE 60 MICRON NOZZLE	

UHS *	Max. line speed for samples as shown (feet per minute)	
	1620/1650 UHS	50 Micron (μ) Nozzle Print Sample
Font/Lines		
4x5 Single	1,666	ABCDEFG 12345 4X5
5x5 Single	1,388	ABCDEFG 12345 5X5
4x7 Single	1,111	ABCDEFG 12345 4X7
5x7 Single	925	ABCDEFG 12345 5X7
7x9 Single	833	ABCDEFG 12345 7X
10x16 Single	396	ABCDEFG 1234
4x5 Twin	833	ABCDEFGHIJKLMN OP 1234567890 4X5 TL
5x5 Twin	694	ABCDEFGHIJKLMN OP 1234567890 5X5 TL
4x7 Twin	625	ABCDEFGHIJKLMN OP 1234567890 4X7 TL
5x7 Twin	520	ABCDEFGHIJKLMN OP 1234567890 5X7 TL
7x9 Twin	297	ABCDEFGHIJKLMN OP 1234567890 7X9 TL
4x5 Three	588	ABCDEFGHIJKL 1234567890 4X5 TRI LINE
5x5 Three	490	ABCDEFGHIJKL 1234567890 5X5 TRI LINE
4x7 Three	434	ABCDEFGHIJKL 1234567890 4X7 TRI LINE
5x7 Three	362	ABCDEFGHIJK 1234567890 5X7 TRI LINE

Linear print speed and character pitch are interrelated on all CIJ printers. The Videojet UHS speeds detailed in the table above are rated for 10 characters per inch. The printers maximum speed is either faster or slower based upon the chosen character pitch.

Speed is shown in (feet per minute)

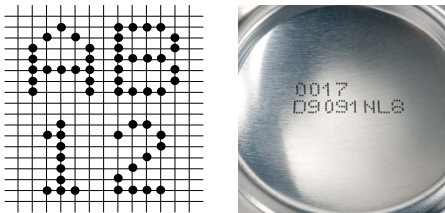
Character Pitch (cpi)	Dual Line 4x7	Dual Line 5x7	Tri-Line 4x7	Tri-Line 5x7
16	350	300	280	250
14	400	350	300	280
12	450	400	350	320
10	600	500	400	350
8	800	650	500	450
6	1050	880	700	550

\*Additional font options available



# Clear, consistent codes

The 1000 Line produces the sharpest codes in the industry. It precisely places every drop, so marks are always clear and easy to read. Dynamic Calibration automatically maintains consistent print quality, even if environmental conditions change.



The Videojet 1000 Line printers are all available with the option of either a 50 micron, 60 micron or 70 micron nozzle inside the printhead. The 70 micron nozzle will benefit customers who require higher contrast or bolder characters, better visible resolution and greater throw distance. The 60 micron nozzle is well-suited for applications that require stronger character definition (ie. Asian and Arabic fonts), smaller print such as that seen on pharmaceutical and cosmetic products and additional spacing between multi-line prints. The 50 micron nozzle, and its specifically paired inks, are designed for high speed applications that require more drops per second and therefore use smaller drops. This nozzle size is also used to get smaller characters and/or more characters on the same space.

## Variety of ink choices to match your application

### Dye based inks

Videojet offers a variety of ink colors to print on light substrates. Available in black, red, blue and green.

ABCDEFGG

70 micron nozzle

ABCDEFGG

60 micron nozzle

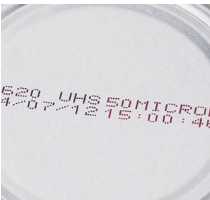
ABCDEFGG

50 micron nozzle



### Dye based speciality inks

Some formulations have special characteristics like color change under retort process, optimized performance for high speeds/small nozzle size, alkali washable, food grade and visible under UV light.



Retort process



Food grade



Ultra high speed

### Pigmented inks for high contrast applications

Videojet offers pigmented fluids ideal for applications requiring high contrast, bright codes on dark or difficult to mark surfaces. These inks provide easily readable codes for applications in the parts marking, extrusion, wire and cable, beverage, electronics, food and personal care markets.



These inks operate in the Videojet 1710 model and deliver high print quality, excellent adhesion and superior contrast.

## Videojet 1000 Line print sample guide

### Infinite possibilities

Description	Print Sample
Four line 5x5 with 16x24 single line	
Logo with four line 5x5	
9x12 multi-language twin line with 10x16 single line	
10x16 single line over 5x7 single line	
Three line 5x7 with 2D DataMatrix	
UPC-A bar code with 25x34 text	
Unlimited possibilities for mixing fonts in the same message	
<b>Linear bar codes</b> Wide range of bar codes for automatic identification. UPC A&E; EAN 8 & 13; Code 128 A, B&C; UCC/EAN 128; Code 39; Interleaved 2 of 5	
<b>2D DataMatrix</b> Wide range of standard 2D and rectangular 2D DataMatrix, including GS1	
<b>Multi-stroke</b> To highlight words or numbers and make codes darker and bolder	
<b>Tower print*</b> To emphasize whole message or specific characters	
<b>Inverted/reversed characters</b> Accommodates product lines going any direction and products in various orientations on the production line	
<b>Unique-character languages</b> American, Arabic, Bulgarian, Chinese, East European, European, Greek, Hebrew, Hungarian, Italian, Japanese, Japanese/Kanji, Japanese/Katakana, Korean, Russian, Simplified Chinese, Scandinavian, Thai, Traditional Chinese, Turkish, Vietnamese	
<b>Graphics and logos</b> Create custom logos on PC and upload via USB	

\*Only available on 1520, 1620, 1620 UHS & 1720 models

Call **800-843-3610**  
Email **info@videojet.com**  
or visit **www.videojet.com**

Videojet Technologies Inc.  
1500 Mittel Blvd. Wood Dale IL 60191 / USA

©2013 Videojet Technologies Inc. — All rights reserved.

Videojet Technologies Inc.'s policy is one of continued product improvement.  
We reserve the right to alter design and/or specifications without notice.  
TrueType is a registered trademark of Apple Computer, Inc.

Part No. SL000572  
1000 line PSG-Imperial-0613  
Printed in U.S.A.

