

Videojet® CLARiSOFT®

Package Coding Design Software

Package Coding Management.

Ink Jet.

Laser.

Thermal Transfer.

Labelers.

Track & Trace.

Supplies.

Parts & Service.

CLARiSOFT® is intuitive Windows® package coding design software that provides one standard design solution for all your coding operations. This patented coder independent technology is created specifically for use with on-line package coding and labeling equipment. CLARiSOFT ensures consistent, accurate messages are applied to the correct packages, even if you utilize more than one type of marking and coding technology in your operation.

Reduce overhead

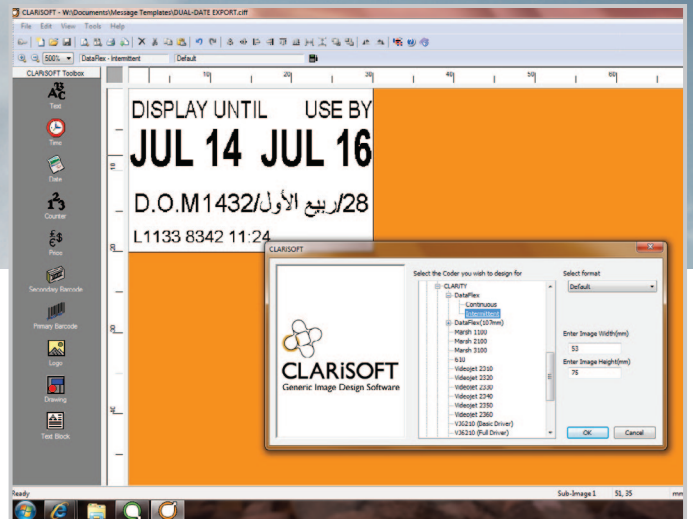
- No need to create different designs for your different coder types
- No need to buy, learn and maintain different printer-specific design software

Increase control, increase efficiency and reduce errors

- All your designs can be created and managed away from the production line
- No need to create image “messages” at every coding machine

Advanced capabilities

- Unique date calculation manager and concession controls to reduce the potential for human error
- Easy-to-use wizard based interface for complex or merged fields such as GS1-128 bar codes



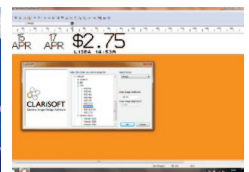
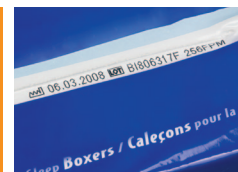
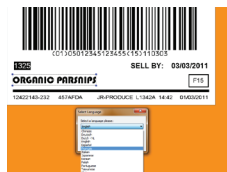
Advanced capabilities (continued)

- Full open-database connectivity (ODBC) for seamless connection to SQL, Access, Excel and generic databases
- Powerful print preview function allows users to review the finished design before printing to reduce waste and save time
- Comprehensive driver support for Videojet thermal transfer overprinters, continuous ink jet printers, high resolution large character and bar code printers, and print and apply labelers

Future proof

- Networking capability for plant-wide solutions when used with CLARiNET® package coding network control software
- The patented generic file structure of CLARiSOFT ensures future compatibility with your choice of coder technology

VIDEOJET®
Uptime Peace of Mind®



Standard Features

Patented coder-independent file format (CIFF)
Near WYSIWYG message design, print preview and editing
Intuitive easy-to-use Windows® interface
Drag-and-drop editing, nudge features and multi-level undo
Configurable and multi-level password control
Inverse print for use with white ribbons
Mirror print for reverse side overprinting
CLARiSOFT Database Manager

Print Options

RS232C or TCP/IP
TCP/IP network using Videojet CLARiNET® network software
Print-to-file (USB) to transfer coder designs to the printer
Parallel, USB and network Windows printers

Object Edit Functions

Resize/ Position – drag + xy co-ordinate entry
Grid (configurable)
Rotate (0°, 90°, 180° and 270°)
Object overlays
Object mirror, phantom and inverse

Field Types

Text (fixed, prompted or database)
Text Block (paragraphs)
Time
Date (fixed, prompted, calculated or database)
Counter (alpha, numeric or alpha-numeric)
Merged Fields
Bar Code (linear, stacked or 2D)
Logo (graphic import)
Drawing (shape drawing; outline or filled)
Automatic User ID, Line ID or Equipment ID

Text Capabilities

Windows TrueType® fonts
Embedded printer fonts
Multi-line text (paragraphs)

Variable Functions

Prompted (user input at print time)
Prompted with mask (e.g. numeric only)
Prompted user list (user selection from pre-defined list)
Date calculations (pre-defined date offset)
Concession management (limit user entry to prevent errors)
Automatic date rounding (round up, down or nearest)
Reference date calculations (e.g. Use By = Sell By + 1)
Counter (alpha, numeric or alpha-numeric)
Date and time (choice of pre-defined and custom formats)

Graphic File Formats (for import)

BMP, JPEG, PCX, PNG, TIFF

Bar Codes

UPC-A, UPC-E, EAN8, EAN13 (incl. price verifiers)
GS1-128 (Code 128, UCC/EAN 128)
Code 39, Interleaved 2 of 5 (ITF)
GS1 Databar (RSS), GS1 Datamatrix (2D bar code)
PDF 417, Micro PDF417 (2D bar codes)

Languages:

CLARiSOFT is available in English, Dutch, French, German, Italian, Japanese, Korean, Polish, Portuguese, Simple Chinese, Spanish, Taiwanese, Thai and Traditional Chinese.

Character Sets

Full Unicode support including Chinese, Russian, Scandinavian, Greek, Arabic and Japanese/Kanji character sets

Date Languages

Automatic date language conversion

Database Connections

Integral open-database-connectivity (ODBC) connection to SQL, Access, Excel and generic databases

Minimum System Requirements

Windows operating system (Windows 7, Vista, 2000, XP, Server 2003 or Server 2008)
Pentium 2 200MHz. 128MB RAM, 300 MB disk space.
1024x768 16 bit color display. Mouse. CD-ROM. USB port.

Videojet Package Coding Management (PCM) Software

The Videojet suite of PCM software includes CLARiSOFT package coding design software, CLARiNET package coding network control software, optional portable or unattended (fixed position) bar code validation and CLARiNET Intranet remote view modules. For further information contact your local Videojet sales engineer or distributor.

IMPORTANT NOTE

The specific capabilities in respect of field types, fonts and character sets will be dependent upon the specific model of printer. Contact your local Videojet sales engineer or distributor to ensure that the appropriate printer firmware can support connection with CLARiSOFT software. An upgrade may be required.



800-843-3610

www.videojet.com / info@videojet.com

Videojet Technologies Inc. / 1500 Mittel Blvd.
Wood Dale IL 60191-1073 / USA

Phone 630-860-7300 Fax 800-582-1343

