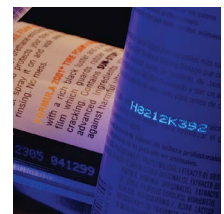
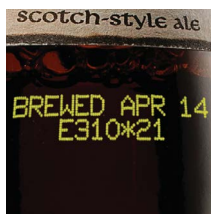




Continuous Ink Jet

Videojet 1000 line print sample guide



Videojet 1000 line print sample guide

| Font/Lines | Max. line speed for samples as shown (m/minute) | | | | 70 Micron (μ) Nozzle Print Sample |
|--------------|---|----------------------|----------------------|------|--|
| | 1220 | 1520/1550 | 1600 Series* | 1710 | |
| 4x7 Single | N/A | N/A | 293 | 244 | ABCDEFGF 12345 4X7 |
| 5x5 Single | 162 | 279 | 279 | 271 | ABCDEFGF 12345 5X5 |
| 5x7 Single | 139 | 244 | 244 | 203 | ABCDEFGF 12345 5X7 |
| 7x9 Single | 70 (70μ) 72 (60μ) | 108 | 163 | 163 | ABCDEFGF 12345 7X9 |
| 9x12 Single | 78 | 78 | 78 | 79 | ABCDEFGF 12345 9X12 |
| 10x16 Single | 59 | 59 | 93 | 77 | ABCDEFGF 12345 |
| 16x24 Single | 29 | 29 | 29 | 24 | ABCDEFGF 1234 |
| 25x34 Single | 16 | 16 | 16 | 14 | ABCDE 12 |
| 5x5 Twin | 59 | 78 | 115 | 96 | ABCDEFGHIJKLMN OP 1234567890 5X5 TL |
| 4x7 Twin | N/A | N/A | 146 | 122 | ABCDEFGHIJKLMN OP 1234567890 4X7 TL |
| 5x7 Twin | 59 | 61 (70μ) 81 (60μ) | 122 | 102 | ABCDEFGHIJKLMN OP 1234567890 5X7 TL |
| 7x9 Twin | 29 | 36 (70μ) 38 (60μ) | 70 | 58 | ABCDEFGHIJKLMN OP 1234567890 7X9 TL |
| 9x12 Twin | 26 | 26 | 26 | 21 | ABCDEFGHIJKLMN 1234567890 9X12 TL |
| 10x16 Twin | 16 | 16 | 16 | 14 | ABCDEFGHIJKLMN OPQR 1234567890 10X16 TL |
| 5x5 Three | 29 | 36 | 36 (70μ) 38 (60μ) | 32 | ABCDEFGHIJKL 1234567890 5X5 TRI LINE |
| 4x7 Three | N/A | N/A | 81 | 67 | ABCDEFGHIJKL 1234567890 4X7 TRI LINE |
| 5x7 Three | 27 | 27 | 67 | 56 | ABCDEFGHIJKL 1234567890 5X7 TRI LINE |
| 7x9 Three | 16 | 16 | 16 (70μ) 37 (60μ) | 31 | ABCDEFGHIJKL 1234567890 7X9 TRI LINE |
| 5x5 Four | 26 | 26 | 26 | 21 | ABCDEFGHIJKLMN O 1234567890 4 LINES OF PRINT 5X5 QUAD LINE |
| 4x7 Four | N/A | N/A | 20 | 16 | ABCDEFGHIJKLMN O 1234567890 4 LINES OF PRINT 4X7 QUAD LINE |
| 5x7 Four | 16 | 16 | 16 | 14 | ABCDEFGHIJKLMN O 1234567890 4 LINES OF PRINT 5X7 QUAD LINE |
| 5x5 Five | 16 | 16 | 16 | 14 | ABCDEFGHIJKLMN O 1234567890 5 LINES OF PRINT 5X5 FIVE LINE 70 MICRON NOZZLE |

N/A = Not Available *1600 Series includes 1620, 1650 and 1610 Dual Head models.

Videojet 1000 line print sample guide

| 60 Micron (μ) Nozzle Print Sample | |
|--|--|
| ABCDEFGF 12345 4X7 | |
| ABCDEFGF 12345 5X5 | |
| ABCDEFGF 12345 5X7 | |
| ABCDEFGF 12345 7X9 | |
| ABCDEFGF 12345 9X12 | |
| ABCDEFGF 12345 | |
| ABCDEFGF 123 | |
| ABCDE 12 | |
| ABCDEFGHIJKLMN OP 1234567890 5X5 TL | |
| ABCDEFGHIJKLMN OP 1234567890 4X7 TL | |
| ABCDEFGHIJKLMN OP 1234567890 5X7 TL | |
| ABCDEFGHIJKLMN OP 1234567890 7X9 TL | |
| ABCDEFGHIJKLMN 1234567890 9X12 TL | |
| ABCDEFGHIJKLMNO P 1234567890 10X16 T | |
| ABCDEFGHIJKL 1234567890 5X5 TRI LINE | |
| ABCDEFGHIJKL 1234567890 4X7 TRI LINE | |
| ABCDEFGHIJKL 1234567890 5X7 TRI LINE | |
| ABCDEFGHIJKL 1234567890 7X9 TRI LINE | |
| ABCDEFGHIJKLMN O 1234567890 4 LINES OF PRINT 5X5 QUAD LINE | |
| ABCDEFGHIJKLMN O 1234567890 4 LINES OF PRINT 4X7 QUAD LINE | |
| ABCDEFGHIJKLMN O 1234567890 4 LINES OF PRINT 5X7 QUAD LINE | |
| ABCDEFGHIJKLMN O 1234567890 5 LINES OF PRINT 5X5 FIVE LINE 60 MICRON NOZZLE | |

| UHS * Font/Lines | Max. line speed for samples as shown (m/minute) | |
|---------------------|---|---|
| | 1620/1650 UHS | 50 Micron (μ) Nozzle Print Sample |
| 4x5 Single | 508 | ABCDEFG 12345 4X5 |
| 5x5 Single | 423 | ABCDEFG 12345 5X5 |
| 4x7 Single | 339 | ABCDEFG 12345 4X7 |
| 5x7 Single | 282 | ABCDEFG 12345 5X7 |
| 7x9 Single | 254 | ABCDEFG 12345 7X |
| 10x16 Single | 121 | ABCDEFG 1234 |
| 4x5 Twin | 254 | ABCDEFGHIJKLMN OP 1234567890 4X5 TL |
| 5x5 Twin | 212 | ABCDEFGHIJKLMN OP 1234567890 5X5 TL |
| 4x7 Twin | 191 | ABCDEFGHIJKLMN OP 1234567890 4X7 TL |
| 5x7 Twin | 158 | ABCDEFGHIJKLMN OP 1234567890 5X7 TL |
| 7x9 Twin | 91 | ABCDEFGHIJKLMN OP 1234567890 7X9 TL |
| 4x5 Three | 179 | ABCDEFGHIJKL 1234567890 4X5 TRI LINE |
| 5x5 Three | 149 | ABCDEFGHIJKL 1234567890 5X5 TRI LINE |
| 4x7 Three | 132 | ABCDEFGHIJKL 1234567890 4X7 TRI LINE |
| 5x7 Three | 110 | ABCDEFGHIJK 1234567890 5X7 TRI LINE |

Linear print speed and character pitch are interrelated on all CIJ printers. The Videojet UHS speeds detailed in the table above are rated for 10 characters per inch. The printers maximum speed is either faster or slower based upon the chosen character pitch.

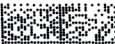






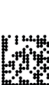




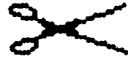
Speed is shown in (meters per minute)

| Character Pitch (cpi) | Dual line 4x7 | Dual line 5x7 | Tri-line 4x7 | Tri-line 5x7 |
|-----------------------|---------------|---------------|--------------|--------------|
| 16 | 110 | 100 | 90 | 80 |
| 14 | 125 | 115 | 105 | 95 |
| 12 | 150 | 135 | 125 | 115 |
| 10 | 190 | 165 | 155 | 145 |
| 8 | 240 | 210 | 195 | 185 |
| 6 | 310 | 265 | 215 | 170 |

*Additional font options available

Videojet 1000 line print sample guide

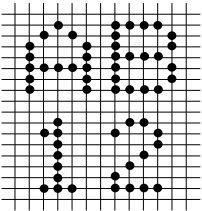
Infinite possibilities

| Description | Print Sample |
|---|---|
| Four line 5x5 with 16x24 single line | <div>BAKED FRESH ON JUNE 12 BEST IF USED BY JUNE 30</div> <div>\$2.29</div> |
| Logo with four line 5x5 | <div><div>F 85-000-00 CEE</div><div>03/04/10 LOT 1324DE 10:34:36</div></div> |
| 9x12 multi-language twin line with 10x16 single line | <div>此日期前最佳: BEST IF USED BY: 02/10/10</div> |
| 10x16 single line over 5x7 single line | <div>SELL BY JUNE 05</div> <div>2% MILK</div> |
| Three line 5x7 with 2D DataMatrix | <div>04672203002819 R220734 13/04 - 2010</div> <div></div> |
| UPC-A bar code with 25x34 text | <div>UPC-A</div> |
| Unlimited possibilities for mixing fonts in the same message | <div>UPC-A BAR CODE</div> <div>TEXT 34H</div> |
| <div>Linear bar codes</div> <div>Wide range of bar codes for automatic identification. UPC A&E; EAN 8 & 13; Code 128 A, B&C; UCC/EAN 128; Code 39; Interleaved 2 of 5</div> | <div>Code 39 with human readable</div> <div>UPC A</div> <div>Interleaved 2 of 5</div> |
| <div>2D DataMatrix</div> <div>Wide range of standard 2D and rectangular 2D DataMatrix, including GS1</div> | <div></div> |
| <div>Multi-stroke</div> <div>To highlight words or numbers and make codes darker and bolder</div> | <div>5 X 7 TWIN LINE DOUBLE STROKE</div> |
| <div>Tower print*</div> <div>To emphasize whole message or specific characters</div> | <div><div>TOWER</div><div>Multi-stroke</div><div>TOWER - 1025M3</div><div>Tower print – stacked, automatic reverse</div></div> |
| <div>Inverted/reversed characters</div> <div>Accommodates product lines going any direction and products in various orientations on the production line</div> | <div>REVERSE CHARACTER EGASSEM ESREVER</div> <div>INVERTED MESSAGE</div> |
| <div>Unique-character languages</div> <div>American, Arabic, Bulgarian, Chinese, East European, European, Greek, Hebrew, Hungarian, Italian, Japanese, Japanese/Kanji, Japanese/Katakana, Korean, Russian, Simplified Chinese, Scandinavian, Thai, Traditional Chinese, Turkish, Vietnamese</div> | <div>合格年月日期生产保质 アカサタナハマヤラワ</div> <div>有效批号班次至品使用</div> <div>Katakana</div> <div>Chinese</div> <div>ابتثجححذدزرزصضطعغفقكللمنهوى</div> <div>Arabic</div> |
| <div>Graphics and logos</div> <div>Create custom logos on PC and upload via USB</div> | <div><div>----- TO OPEN CUT AT LINE</div></div> |

*Only available on 1520, 1620, 1620 UHS & 1720 models

Clear, consistent codes

The 1000 Line produces the sharpest codes in the industry. It precisely places every drop, so marks are always clear and easy to read. Dynamic Calibration automatically maintains consistent print quality, even if environmental conditions change.



The Videojet 1000 line printers are all available with the option of either a 50 micron, 60 micron or 70 micron nozzle inside the printhead. The 70 micron nozzle will benefit customers who require higher contrast or bolder characters, better visible resolution and greater throw distance. The 60 micron nozzle is well-suited for applications that require stronger character definition (ie. Asian and Arabic fonts), smaller print such as that seen on pharmaceutical and cosmetic products and additional spacing between multi-line prints. The 50 micron nozzle, and its specifically paired inks, are designed for high speed applications that require more drops per second and therefore use smaller drops. This nozzle size is also used to get smaller characters and/or more characters on the same space.

ABCDEFGH

70 micron nozzle

ABCDEFGH

60 micron nozzle

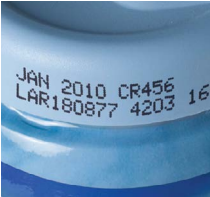
ABCDEFGH

50 micron nozzle

Variety of ink choices to match your application

Dye based inks

Videojet offers a variety of ink colors to print on light substrates. Available in black, red, blue and green.



Dye based speciality inks

Some formulations have special characteristics like color change under retort process, optimized performance for high speeds/small nozzle size, alkali washable, food grade and visible under UV light.



Retort process



Food grade



Ultra high speed

Pigmented inks for high contrast applications

Videojet offers pigmented fluids ideal for applications requiring high contrast, bright codes on dark or difficult to mark surfaces. These inks provide easily readable codes for applications in the parts marking, extrusion, wire and cable, beverage, electronics, food and personal care markets.



These inks operate in the Videojet 1710 model and deliver high print quality, excellent adhesion and superior contrast.

Call **+971 4 550 8713**
Email **MEA.Sales@videojet.com**
or visit **<http://www.videojet.eu/me/en>**

Videojet Technologies Inc.
3rd Floor, Al Zahrawi Building #34
Dubai Healthcare City
Oud Metha
P.O.Box 71569
Dubai
United Arab Emirates

©2013 Videojet Technologies Inc. — All rights reserved.
Videojet Technologies Inc.'s policy is one of continued product improvement.
We reserve the right to alter design and/or specifications without notice.
TrueType is a registered trademark of Apple Computer, Inc.
Videojet® BX Series Binary Array Ink Jet Printers.

