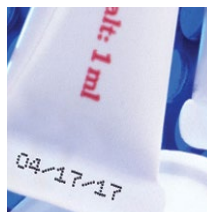


# Tubes

## Flexible solutions for convenience packaging

The use of tubes for cosmetics and personal care products is becoming increasingly popular as they offer suppliers, brands and consumers alike, one of the most convenient and cost-effective packaging solutions.

Available in a variety of portable shapes and sizes, tubes hygienically enable consumers to squeeze nearly 100% of the product out of the package, usually with easy, one-handed dispensing. Their frequent recyclability also strikes a chord with consumers increasingly concerned with environmental sustainability. As tubes can come in a variety of sizes and packaging materials, it is important to consider the best solution to meet both operational and brand objectives. Another consideration is where the best place is during the packaging and filling process to apply the necessary code. For example, before filling could offer the most stable and controlled position for the packaging.



Direct to metal/  
plastic package



### Continuous Inkjet (CIJ)

- print sizes available with compact High Resolution micron nozzles for your small, hard-to-code areas
- high contrast text ideal for customizing tubes with color numbers or names
- versatile design is easily modified for different package sizes and shapes
- UV inks enable covert coding solutions

Direct to metal/  
plastic package



### Laser Marking Systems

- clear high contrast codes, logos and text achieved through color change on certain plastic packaging to ensure permanence and brand protection
- removal of top layer of paint on decorated tubes or labels gives high contrast, codes that won't detract from the brand
- possible to code inside of package to prevent tampering

Direct to label



### Thermal Transfer Overprint (TTO)

- ideal for dark packaging when a contrasting code is required
- prints on label prior to application
- many different ribbon colors available