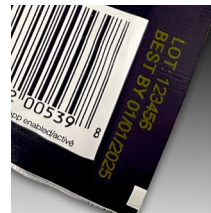


Thermal Inkjet

# Videojet / Wolke inks



# Setting the **gold standard** in ink purity, performance, reliability and customer service

Over 40 years of ink and fluid technology, starting with those created for the first commercial inkjet printer, goes into every ink that Videojet formulates and delivers today. With specially-formulated inks for our thermal inkjet range of printers, Videojet can match the ideal ink for your application.

## Our **gold standard** approach

Our inks and supplies extend uptime, reduce waste, improve supply chains and deliver clean, clear codes every time. They're the gold standard in...



Quality



Design



Performance



Compatibility



Compliance



Customer Service



## Quality

Videojet inks give you high ink purity and that's guaranteed. Behind every batch lies 100s of hours of testing and years of expert chemical engineering – ensuring the consistent gold standard our customers demand.

# Inks to help ensure maximum print quality

The interaction between original cartridges and standardized thermal inkjet (TIJ) inks from Videojet/Wolke delivers consistent, high-quality print. Our broad range of inks impresses users with excellent contrast, a high level of light fastness, and long decap times.

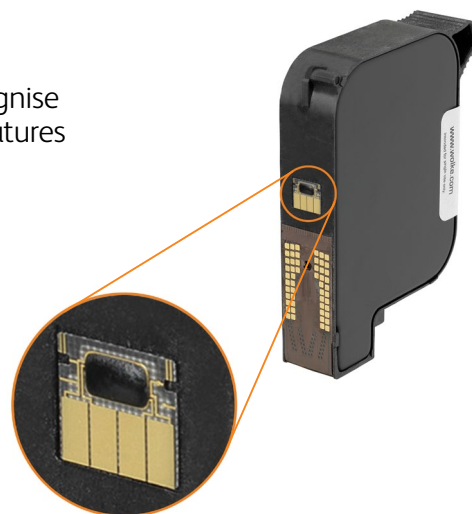
## TIJ cartridge authentication\*

The Videojet 8520 and Wolke m610 series automatically recognise authentic Videojet ink cartridges and offer many advanced features to help reduce user errors and ensure maximum print quality.

Features include:

- Portable ink level tracking
- Restriction/permission of ink type
- Ink batch/lot number tracking
- Expiration date notification

\*TIJ cartridge authentication is only available when using the Wolke m610 series in combination with authentic Videojet ink cartridges. Authentic Videojet ink cartridges also work seamlessly in the legacy Videojet 8510 and the Wolke models m600 advanced, m600 oem, m600 universal, and m600 touch.



Authentic Videojet ink cartridges are equipped with a chip to transmit information to the printer. Part numbers of authentic Videojet cartridges end with an 'A', e.g. WLK660068A.



## Design

Our team of world-class chemists design inks for a wide range of coding requirements and are constantly researching new formulations to meet new coding application challenges.



# Discover our advanced TIJ ink solutions

Our Cool Black, Global Black, Global Solvent Black, Premium Black and Universal Black advanced TIJ ink solutions are proprietary to Videojet and have been formulated and are manufactured in-house

This brings numerous benefits:

- Strict control over raw material quality, manufacturing processes, and supply chain management to help ensure high-quality, stable supply
- Confidence in the ink formulation and compliance with major applicable global regulations
- As an approved HP® partner, our TIJ inks are filled in genuine HP cartridges that provide a new printhead every time you replace a cartridge



Talk with one of our supplies experts about our TIJ inks with features that may outperform your current ink solution! Our consumables team is happy to advise you on the ink conversion.



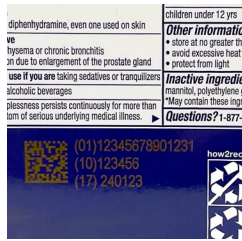
## Performance

Videojet inks offer extended uptime, trouble-free operation, and a long shelf life (up to 24 months), as well as consistently clean and clear codes.



# Solutions for every application

Videojet has invested significant resources to design leading ink solutions for a vast range of substrates and applications.



## Pharmaceutical and medical

Excellent print quality are non-negotiable when it comes to coding pharmaceutical and medical device products to help ensure authenticity, freshness, and traceability.

**Substrates:** Paper cartons, blister packs, tyvek, glass vials and plastic bottles

**Inks:** WLK660084A, WLK660082A, WLK667482A, WLK660090A



## Dairy and eggs

Focus on food safety is paramount for egg producers. The need to easily communicate important best by and traceability data helps ensure compliance with safety regulations.

**Substrates:** Paper cartons, coated cartons, flexible packaging, plastic containers, metal cans, glass jars

**Inks:** WLK660084A, WLK660068A, WLK660070A, WLK660090A



## Compatibility

Genuine Videojet inks work in harmony with their environment to give you guaranteed compatibility with our printers.

Our specially-formulated inks are optimised for our printers. In comparison, non-Videojet cartridges can cause printing resistors to fail (kogation), leading to unscheduled internal corrosion, maintenance, and downtime.







## Tobacco

Due to tendency to acquire odours from their environment during the manufacturing process, tobacco producers are vigilant about minimising any odour that might impart unwanted flavours.

**Substrates:** Cigarette, cigar and tobacco packages

**Inks:** WLK660068A, WLK660070A, WLK660082A, WLK660090A



## Baked goods and cereals

Due to tendency to acquire odours from their environment during the manufacturing process, bakeries are vigilant about minimising any odour that might impart unwanted flavours.

**Substrates:** Bread bags, cookie and cracker boxes, and paper cartons

**Inks:** WLK660068A, WLK660070A, WLK660082A



## Candy and confection

Due to it's flexible nature and filling speed, producers prefer to code on the film prior to filling where the film is being controlled. Fast dry times are essential to avoid transfer onto the rollers.

**Substrates:** Plastic wrappers, paper cartons, coated cartons, flexible film, plastic containers

**Inks:** WLK660084A, WLK660068A, WLK660082A



## Compliance

### iQMark™ coding

iQMark™ supplies are responsibly designed and manufactured to maximise contrast, adhesion and uptime while meeting safety, environmental and regulatory requirements. The iQMark™ line of inks, make-ups and cleaners can address multiple application requirements from a single formulation including MEK-free and low-odour inks.



# Videojet Thermal Inkjet

## Ink chart



| Vertical                             | Substrate   | Ink        | Description     | Contrast | Solvent | Decap Time | iQMark |
|--------------------------------------|---|------------|-----------------|----------|---------|------------|--------|
| <b>Pharmaceutical and medical</b>    | Plastic cartons, blister packs, tyvek, glass vials and plastic bottles                        | WLK660084A | Cool Black      | Medium   | Ethanol | Very Good  | ✓      |
|                                      |   | WLK660082A | Global Solvent  | High     | Ethanol | Excellent  |        |
|                                      |   | WLK667482A | Universal Black | Medium   | Water   | Very Good  |        |
|                                      |   | WLK660090A | Yellow          | Medium   | Ethanol | Fair       | ✓      |
| <b>Dairy &amp; Eggs</b>              | Paper cartons, coated cartons, flexible packaging, plastic containers, metal cans, glass jars | WLK660084A | Cool Black      | Medium   | Ethanol | Very Good  | ✓      |
|                                      |   | WLK660068A | Premium Black   | Med-High | Water   | Very Good  |        |
|                                      |   | WLK660070A | Global Black    | Medium   | Water   | Very Good  |        |
|                                      |   | WLK660090A | Yellow          | Medium   | Ethanol | Fair       | ✓      |
| <b>Tobacco</b>                       | Cigarette and cigar packages  | WLK660068A | Premium Black   | Med-High | Water   | Very Good  |        |
|                                      |   | WLK660070A | Global Black    | Medium   | Water   | Very Good  |        |
|                                      |   | WLK660082A | Global Solvent  | High     | Ethanol | Excellent  |        |
|                                      |   | WLK660090A | Yellow          | Medium   | Ethanol | Fair       | ✓      |
| <b>Baked Goods and Cereals</b>       | Bread bags, cookie and cracker boxes, and paper cartons                                       | WLK660068A | Premium Black   | Med-High | Water   | Very Good  |        |
|                                      |   | WLK660070A | Global Black    | Medium   | Water   | Very Good  |        |
|                                      |   | WLK660082A | Global Solvent  | High     | Ethanol | Excellent  |        |
| <b>Candy &amp; Confection</b>        | Plastic wrappers, paper cartons, coated cartons, flexible film, plastic containers            | WLK660084A | Cool Black      | Medium   | Ethanol | Very Good  | ✓      |
|                                      |   | WLK660068A | Premium Black   | Med-High | Water   | Very Good  |        |
|                                      |   | WLK660082A | Global Solvent  | High     | Ethanol | Excellent  |        |
| <b>Meat &amp; Poultry</b>            | Flexible packaging, paper cartons, coated cartons, cans, glass jars                           | WLK660084A | Cool Black      | Medium   | Ethanol | Very Good  | ✓      |
|                                      |   | WLK660075A | Water Resistant | High     | Water   | Excellent  |        |
| <b>Fresh &amp; Frozen Food</b>       | Flexible packaging, paper cartons, coated cartons   | WLK660084A | Cool Black      | Medium   | Ethanol | Very Good  | ✓      |
|                                      |   | WLK660075A | Water Resistant | High     | Water   | Excellent  |        |
| <b>Building Materials</b>            | Flexible packaging, paper cartons, coated cartons   | WLK660084A | Cool Black      | Medium   | Ethanol | Very Good  | ✓      |
|                                      |   | WLK660082A | Global Solvent  | High     | Ethanol | Excellent  |        |
|                                      |   | WLK660068A | Premium Black   | Med-High | Water   | Very Good  |        |
| <b>Cosmetics &amp; Personal Care</b> | Flexible packaging, paper cartons, coated cartons   | WLK660084A | Cool Black      | Medium   | Ethanol | Very Good  | ✓      |
|                                      |   | WLK660082A | Global Solvent  | High     | Ethanol | Excellent  |        |
|                                      |   | WLK660081A | Flex Solvent    | High     | Ethanol | Very Good  |        |
| <b>Cannabis</b>                      | Flexible packaging, paper cartons, coated cartons   | WLK660084A | Cool Black      | Medium   | Ethanol | Very Good  | ✓      |
|                                      |   | WLK660082A | Global Solvent  | High     | Ethanol | Excellent  |        |
|                                      |   | WLK660068A | Premium Black   | Med-High | Water   | Very Good  |        |



## Customer Service

We want you to buy with confidence anytime you purchase Videojet inks or supplies. That's why the quality of our service is guaranteed under our 'Gold Guarantee' promise, to ensure your inks are within the agreed specification.

Our experienced customer service team are on hand to answer a wide variety of questions, from regulatory concerns to ink placement on packaging.



With over 40 years of inkjet experience, Videojet is the perfect partner to help packaging professionals with their coding and printing needs. We study the evolution of packaging materials, understand the range of manufacturing environments, and proactively apply rigorous ink development processes to ensure code performance and integrity.

**Speak to our team to select the ideal ink to suit your individual application requirements.**



Call **+91 75063 45599**  
Email **marketing.india@videojet.com**  
or visit **www.videojet.in**

Videojet Technologies (I) Pvt Ltd  
Godrej Two, Unit no. 403 - A, 4th Floor,  
Pirojshanagar, Eastern Express Highway,  
Vikhroli East, Mumbai - 400079

© 2024 Videojet Technologies Inc. — All rights reserved.  
Videojet Technologies Inc.'s policy is one of continued product improvement.  
We reserve the right to alter design and/or specifications without notice.  
HP is a registered trademark of Hewlett-Packard Development Company, L.P.

Part No. SL000702  
br-videojet-wolke-inks-en-in-0224

